



Apt 226 Silkhouse Court, Tithebarn Street, Liverpool, L2 2AA
£700 Per Month

www.
cityresidential
.co.uk



About the Property

Available Now – Stunning Studio Apartment in Silkhouse Court!

This beautifully presented studio apartment, located on the second floor of Silkhouse Court, is now available!!

Situated on Tithebarn Street, Silkhouse Court is perfectly positioned in the heart of Liverpool's bustling business district. The location offers easy access to a wealth of local amenities, including vibrant bars, restaurants, and cultural landmarks such as Liverpool's iconic Waterfront and the Royal Albert Dock. For commuters, Moorfields Station and local bus links are just a short walk away, making travel a breeze.

The property boasts a welcoming entrance hall and a spacious open plan living and kitchen area, flooded with natural light, a beautifully tiled bathroom and the studio comes fully furnished.

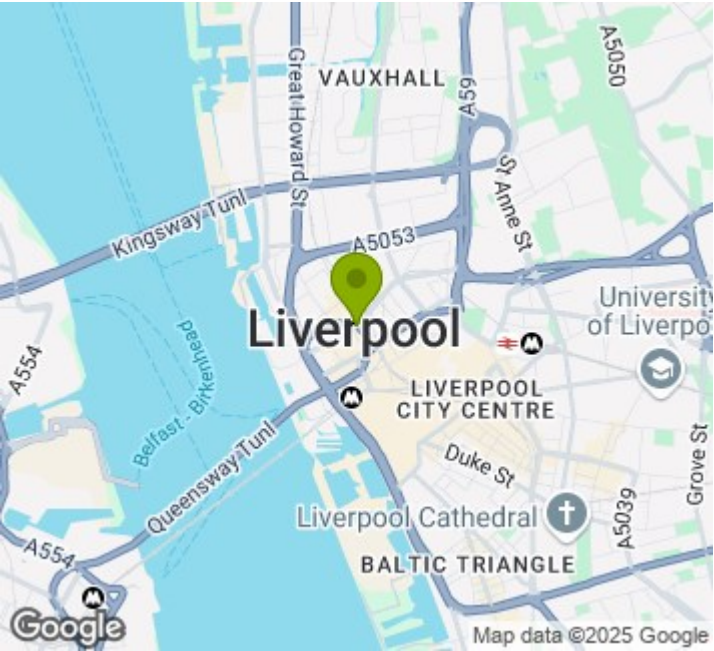
The building benefits from a lift servicing all floors.

Please note, this property does not include parking.

With its prime location and stylish finish, this studio is expected to generate high demand. Early viewings are strongly recommended to fully appreciate its charm and appeal.

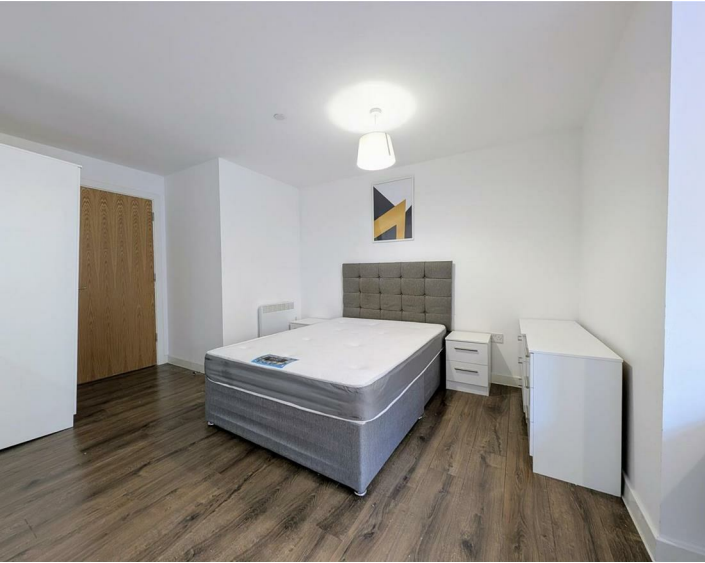
Don't miss out! Contact City Residential today on 0151 231 6100 or visit www.cityresidential.co.uk to arrange a viewing or for more details. Act fast – this one won't stay available for long!

- Available Now!!
- Fully Furnished Studio
- Central Location
- 2nd Floor
- Must Be Viewed!!
- Deposit Payable £807
- EPC Rating - C78
- Council Tax Band - A



Energy Efficiency Rating

	Current	Potential
Very energy efficient - lower running costs		
(92 plus) A		
(81-91) B		
(69-80) C	78	78
(55-68) D		
(39-54) E		
(21-38) F		
(1-20) G		
Not energy efficient - higher running costs		
England & Wales	EU Directive 2002/91/EC	



City Residential
81/87 Victoria Street, The Old Haymarket, Liverpool L1 6DG
T: 0151 231 6100 F: 0151 231 6105
E: sales@cityresidential.co.uk



WWW.
cityresidential
.co.uk